



Maritime EHS Solution

Implementing MARPOL, SOLAS, ISPS
and other maritime regulations

About CMO Software

CMO Software is a market leader in enterprise Health, Safety, Environment & Quality (HSE&Q) & GRC solutions for corporations and regulators. The company enables organizations to drive significant business value from their EHS and compliance procedures to improve Operational Risk Management and drive Operational Excellence. This is achieved by streamlining distributed deployments, simplifying remote data capture using mobile devices, and deploying a highly configurable and flexible system capable of meeting current and future business requirements.

For additional information visit
www.cmo-software.com



Maritime EHS Solution

IMPLEMENTING MARPOL, SOLAS, ISPS AND OTHER MARITIME REGULATIONS

Proactively manage health and safety, environmental and security procedures to ensure safer and better-regulated working environments

Maritime organizations have to comply with a wide variety of complex and lengthy health and safety, security and hazardous waste regulations, relating to working in ports and at sea.

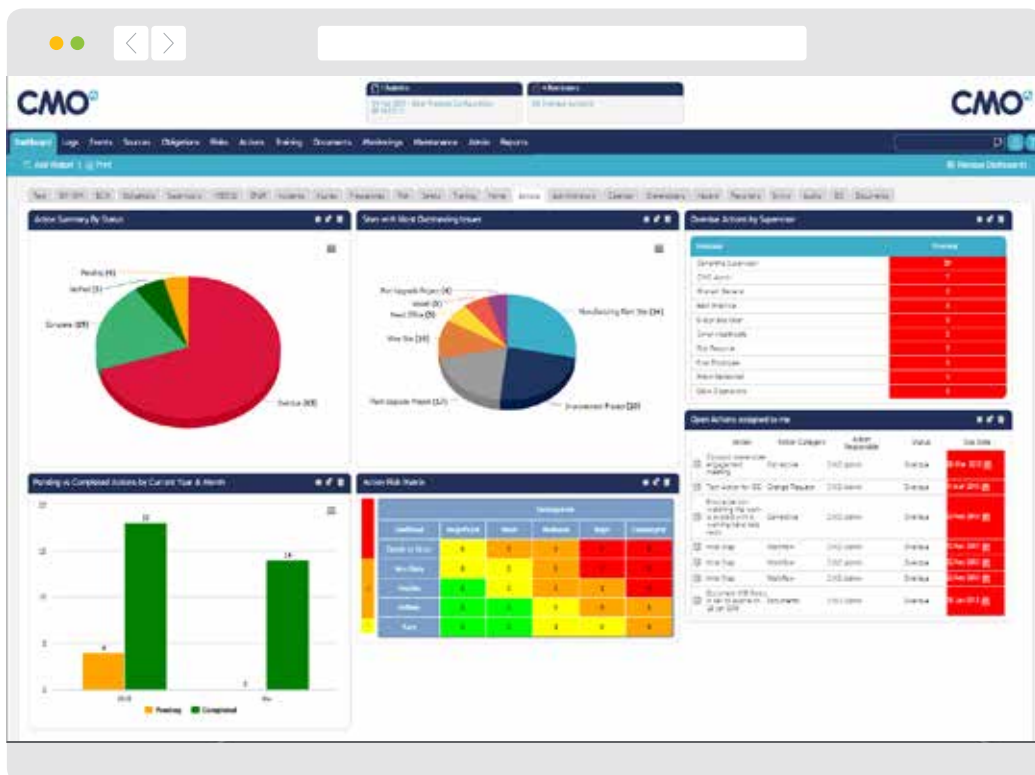
Due to the nature of their businesses, shipping companies can find compliance requirements a significant challenge as there are a wide variety of complex regulations, best practices and codes of conduct they have to satisfy depending on where they are operating.

To meet health and safety regulations such as SOLAS, environmental processes like MARPOL, and ship and port security regulations including ISPS, maritime organizations need an integrated approach to their environmental, health and safety management to effectively and efficiently manage their audits, assessments and compliance requirements.

CMO Software's EHS Maritime Solution enables shipping and port management companies to proactively comply with a wide variety of health and safety, environmental and security regulations.

Audit & Assessment

Audit and Assessment allows vessel operators and port workers to ensure that fire fighting equipment, life saving apparatus and other critical safety devices are regularly checked and are fully operational. This helps them to be compliant with the International Convention for Safety of Life at Sea (SOLAS).



Compliance Management

Compliance Management enables operators to map compliance obligations such as the safe storage and transportation of hazardous goods or the control of waste discharge, to individuals or teams. This helps ensure compliance with regulations such as the International Dangerous Goods Code and the International Convention for the Prevention of Pollution from Ships (MARPOL).



Document & Policy Management

With Document and Policy Management, employees can access to the latest policy documentation so that they can react effectively to any changes in the security level. This helps maritime organizations implement the framework recommended in the International Ship and Port Facility Security Code (ISPS) to ensure compliance with EC 725/2004 in Europe, The Ship and Port Facility (Security) Regulations 2004 in the UK, and The Maritime Transportation Security Act of 2002 in the US.

The screenshot displays the CMO4 software interface. At the top, there is a search bar and navigation tabs for various modules: Dashboard, Logs, Events, Sources, Delegations, Risks, Actions, Training, Documents, Monitorings, Maintenance, Admin, and Reports. Below the navigation, there are several widgets:

- Policy Document Search:** A search bar with 'All Document Types' and a 'Search' button.
- My Training Plan:** A section with a 'My Training Plan' header and a 'Completed' status indicator. It lists training items like 'First Aid Training' and 'Site Induction Training'.
- Health and Safety Management System Policies:** A table listing various policies and their counts.

Policy Name	Documents
HS Health, Safety & Training	1
HS Policy	1
CMO Best Practice Reference Material	1
Task & Reference Material	2
HSOHS - HSE Management System	1
HSOHS - Arrangements	24
HSOHS - HSE Register	2
HSOHS - Introduction	2
HSOHS - Organization	16
HSOHS - Policy	9
HSOHS - Safety Procedures	3
HSOHS	1
HSOHS	3
HSOHS	1



Training & Competence

The management of direct employee and contractor skill levels can be simplified using the Training and Competence and Third Party Management modules. The skillsets of individuals can be compared to their specific job role competencies and, if necessary, training scheduled and delivered to address any identified skills gaps. Senior management can verify that all of their employees are up-to-date with their training to ensure they remain compliant with regulations.

Audits & Assessments		Jan 12	Feb 12	Mar 12	Apr 12	May 12	Jun 12	Jul 12	Aug 12	Sep 12	Oct 12	Nov 12	Dec 12
Form													
AS 4001 Assessment	Planned:	0	0	3	193	0	0	0	0	0	0	0	0
	Actual:	0	0	3	141	0	0	0	0	0	0	0	0
HSE Contractor Audit	Planned:	0	0	0	142	0	0	0	0	0	0	0	0
	Actual:	0	0	0	95	0	0	0	0	0	0	0	0
Total of Audits & Assessments	Planned:	0	0	3	335	0	0	0	0	0	0	0	0
	Actual:	0	0	3	236	0	0	0	0	0	0	0	0
Actions	Due:	0	0	31	308	0	0	0	0	0	0	0	0
	Completed:	0	0	0	0	0	0	0	0	0	0	0	0
	On Time:	100%	100%	0%	0%	100%	100%	100%	100%	100%	100%	100%	100%

Inspections		Jan 12	Feb 12	Mar 12	Apr 12	May 12	Jun 12	Jul 12	Aug 12	Sep 12	Oct 12	Nov 12	Dec 12
Form													
Area Inspection Form	Planned:	0	0	99	115	0	0	0	0	0	0	0	0
	Actual:	0	0	95	115	0	0	0	0	0	0	0	0
Commencing Contractor Checklist	Planned:	0	0	0	100	0	0	0	0	0	0	0	0
	Actual:	0	0	0	100	0	0	0	0	0	0	0	0
Total of Inspections	Planned:	0	0	99	215	0	0	0	0	0	0	0	0
	Actual:	0	0	95	215	0	0	0	0	0	0	0	0
Actions	Due:	0	0	31	308	0	0	0	0	0	0	0	0
	Completed:	0	0	0	0	0	0	0	0	0	0	0	0
	On Time:	100%	100%	0%	0%	100%	100%	100%	100%	100%	100%	100%	100%

Observations		Jan 12	Feb 12	Mar 12	Apr 12	May 12	Jun 12	Jul 12	Aug 12	Sep 12	Oct 12	Nov 12	Dec 12
Form													
HSE Observation Form	Planned:	0	0	99	111	0	0	0	0	0	0	0	0
	Actual:	0	0	10	100	0	0	0	0	0	0	0	0
Total of Observations	Planned:	0	0	99	111	0	0	0	0	0	0	0	0
	Actual:	0	0	10	100	0	0	0	0	0	0	0	0
Actions	Due:	0	0	32	306	0	0	0	0	0	0	0	0
	Completed:	0	0	0	0	0	0	0	0	0	0	0	0
	On Time:	100%	100%	0%	0%	100%	100%	100%	100%	100%	100%	100%	100%



Simple. **Intuitive.** Site-Ready.

Build a safer, better-regulated working environment with EHS & GRC applications that are easy to deploy, adapt and use



CMO SOFTWARE (UK)

Level 25, Millbank Tower
21 – 24 Millbank
London, SW1P 4QP
+44 (0)207 078 7414

CMO SOFTWARE (AUS)

Level 2
432 St Kilda Road
Melbourne, Victoria
Australia 3004
+61 (0)3 9521 7077

CMO SOFTWARE (US)

Northridge Center 1
365 Northridge Road, Suite 250
Atlanta, GA 30350
+1 678 388 9439

